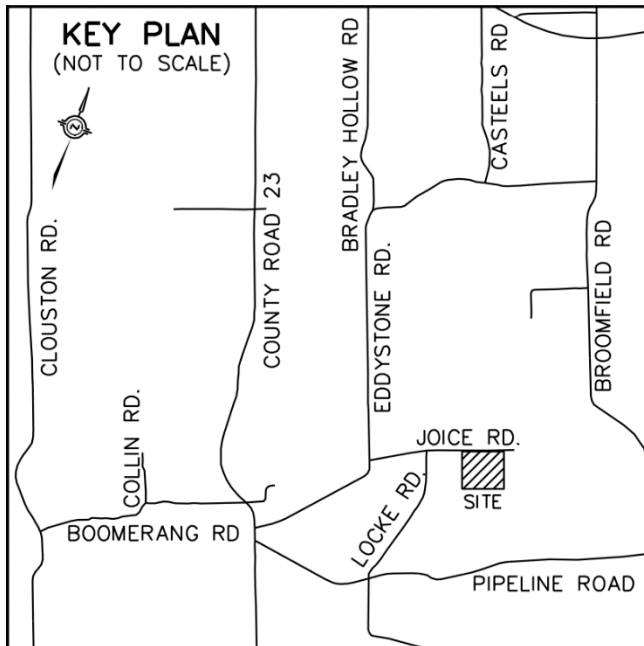




**IMPORTANT NOTICE
FOR PROPERTY OWNERS WITHIN
STIPULATED RADIUS OF PROPOSED
TELECOMMUNICATIONS TOWER**

The Township of Alnwick/Haldimand
**EORN Site C8727 - Eddystone
Rd @ Eddystone**



Like all areas of the province, your community is experiencing explosive demand for wireless services. As people rely more on wireless devices such as smartphones, tablets and laptops for business and personal use, network improvements are required to ensure high quality voice and data services are available.

As an essential service, telecommunications facilities are federal undertakings with a corresponding mandate for carriers to deploy them such that all residents have access to wireless high speed broadband services.

The recent Covid-19 pandemic has highlighted the critical need for seamless coverage as citizens now rely on online communication to meet basic needs for business, education, health care, entertainment, and social engagement. 5G LTE technology is now being extensively deployed to support the *Internet of Things* that will see most everything we use from driverless electric vehicles to contact-less transactions, remote healthcare and worldwide video communication seamlessly connected.

In addition to meeting consumer needs, technological upgrades are also critical to ensuring the accessibility of emergency services such as fire, police, and ambulance. Wireless communications products and services used daily by police, EMS, firefighters, and other first responders are an integral part of Canada's safety infrastructure.

This project falls under the EORN Cell Gaps initiative to improve coverage and capacity of the cell network in the region. Learn more about EORN at www.eorn.ca

All infrastructure development has necessary trade-offs, and Rogers has worked to find the most suitable location for a new telecommunications structure in this area.

Rogers feels that the proposed site is well situated to provide improved wireless voice and data services in the targeted area, is designed to have minimal impact on surrounding land uses and meets the intent of accepted good siting practices under the governing protocol.

Your feedback matters...

ANY PERSON may make a written submission to either individual listed below by **5pm (TBD) , 2022** with respect to this matter. All comments must be received by the close of this business day.

Public input is an important component in the process of deploying this necessary infrastructure. Like any infrastructure, there are often few options available to achieve the necessary technical requirements. What represents reasonable or relevant concerns are specifically defined in the governing protocol.

ISED Canada's rules contain requirements for timely response to all questions, comments, or concerns. We will acknowledge receipt of all communication within 14 days and will provide a formal response to the Land Use Authority and those members of the public who communicate to Rogers, within 60 days. The members of the public who communicated with Rogers will then have 21 days to review and reply to Rogers as a final response.

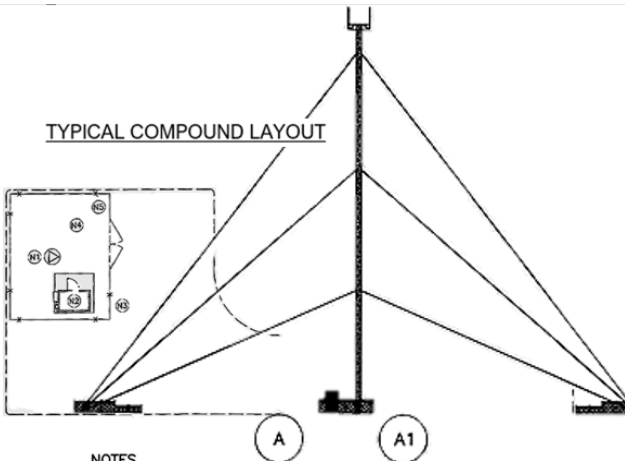
Proponent Contact:
Rogers Communications Inc.
Jeff McKay FCSI MBA, Site Acquisition (Contractor)
(519) 566-9267 j_mckay@rogers.com

Land Use Authority Contact:
Township of Alnwick/Haldimand
10836 Cty. Rd. 2, PO Box 70 Grafton, ON K0K 2G0
Troy Gilmour Deputy CAO
905-349-1100 tgilmour@ahwtp.ca

PLEASE TAKE NOTICE that the approval of this Site and its design is under the exclusive jurisdiction of the Government of Canada through Innovation, Science and Economic Development Canada ("ISED"). The Township of Alnwick/Haldimand has no jurisdiction in this matter other than as a commenting body to ISED and the Applicant. For more information on the approval process contact the local ISED office at 1-855-465-6307.

Proposed Facility:

- 92m Guyed Tower
- Tower Location: 313 Joice Rd, Grafton, ON
- GPS Coordinates: 44.055614, -78.006878
- Technology: 600ESS/700LTE/2100LTE/3500NR
- Civil and Design ready
- Allows future Co-location? Yes



- NOTES**
- (N1) PROPOSED GALVANIZED STEEL GUYED TOWER. PAINT COLOUR SUBJECT TO NAV CANADA REQUIREMENTS. ANTENNA NUMBER AND LOCATIONS TO BE DETERMINED. FOUNDATION DESIGN PENDING SOIL REPORT.
 - (N2) PROPOSED PREFABRICATED GALVANIZED STEEL WALK-IN RADIO EQUIPMENT CABINET ON CAST IN PLACE REINFORCED CONCRETE SLAB, MINIMUM 0.35 m ABOVE FINISHED GRADE.
 - (N3) HYDRO CONNECTION AND ROUTING TO BE DETERMINED BY QUALIFIED PERSONNEL IN CONSULTATION WITH LOCAL AUTHORITY.
 - (N4) REMOVE EXISTING TOPSOIL. PROOF ROLL SUBGRADE AND PLACE 300 mm GRANULAR A ACROSS COMPOUND AREA. FINISHED GRAVEL SURFACE TO BE MIN. 150 mm ABOVE EXISTING GRADE AND SLOPED AWAY FROM SHELTER AT MIN. 1% ON ALL SIDES TO PROVIDE ADEQUATE DRAINAGE.
 - (N5) PROPOSED 1.8 m HIGH CHAIN LINK SECURITY FENCE TOPPED WITH BARBED WIRE SURROUNDING COMPOUND.

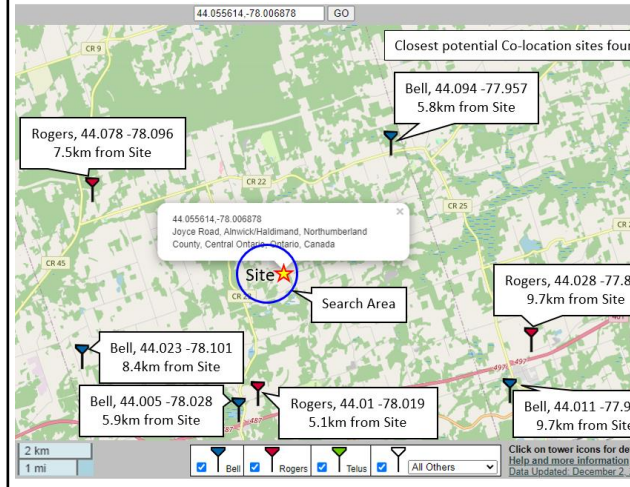


This facility will include a walk-in equipment shelter within a security-fenced Compound of a 15m x 15m leasehold, with 6m wide access lane for road, power line and fiber optics, aerial or underground, as required. Paint colour and lighting subject to NAV Canada

Rogers attests that the proposed facility:

- is neither located within federal lands, nor forms part of or is incidental to projects that are designated by the *Regulations Designating Physical Activities* or otherwise designated by the Minister of the Environment as requiring an environmental assessment. In accordance with the *Canadian Environmental Assessment Act (2012)*, this installation is excluded from assessment. More info: <http://laws-lois.justice.gc.ca/eng/acts/c-15.21/>
- will comply with Transport Canada / NAV Canada aeronautical safety requirements. More info: <https://tc.canada.ca/en/corporate-services/acts-regulations/list-regulations/canadian-aviation-regulations-sor-96-433>
- will be constructed in compliance with the *National Building Code ("NBC")* and The *Canadian Standards Association ("CSA")* and comply with good engineering practices including structural adequacy.
- will **always** comply with *Health Canada's Safety Code 6* limits for the protection of the general public, including any combined effects of additional carrier co-locations and nearby installations within the local radio

Co-location: Rogers reviewed all potential co-location options in the local and/or expanded area for suitability for its coverage use. All such facilities were disqualified due to the extensive distance from the required search area. Tower inventory in the area is depicted below.



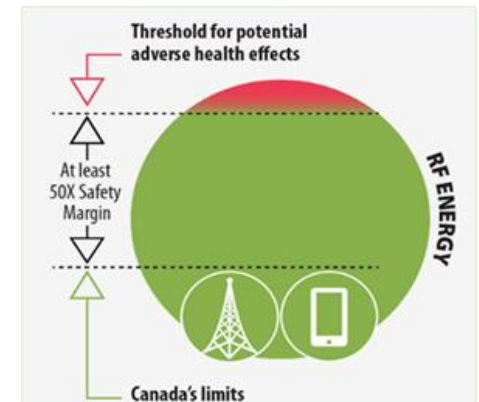
For more information on ISED's **process**, including public consultation guidelines, please visit: <http://www.ic.gc.ca/towers>

... or contact your local **ISED** office at: **Innovation Science and Economic Development Canada - Spectrum Management**

Northern & Eastern Ontario District Office
 2 Queen Street East Sault Ste. Marie ON P6A 1Y3
 Telephone: 1-855-465-6307
 Fax: 705-941-4607
 Email: spectrumenod-spectredeno@ised-isde.gc.ca

General information from ISED Canada:
<http://strategis.ic.gc.ca/antenna>

This figure shows the Canadian regulatory limits that incorporate a **safety margin of at least 50-fold** from the threshold for possible adverse health effects:



View the Canada.ca 5G safety video here:
<https://www.canada.ca/en/health-canada/services/video/5g-technology-safety.html>

