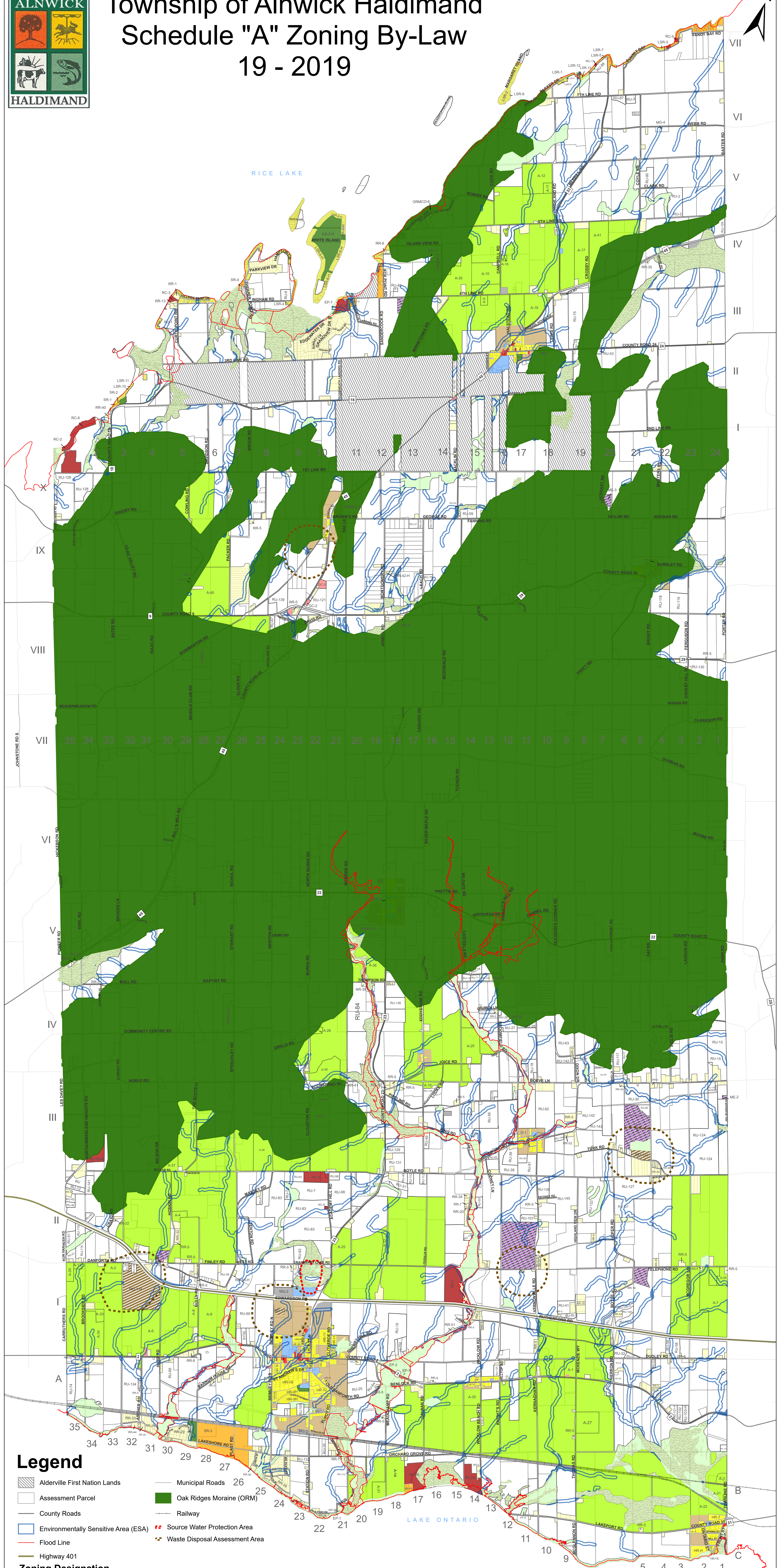
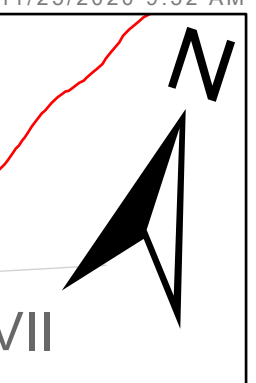


Township of Alnwick Haldimand Schedule "A" Zoning By-Law 19 - 2019



Legend

- Alderville First Nation Lands
- Assessment Parcel
- County Roads
- Environmentally Sensitive Area (ESA)
- Flood Line
- Highway 401
- Municipal Roads
- Oak Ridges Moraine (ORM)
- Railway
- Source Water Protection Area
- Waste Disposal Assessment Area

Zoning Designation

- | | | | |
|-------------------------------|-----------------------------------|--|--------------------------------|
| Agricultural (A) | General Commercial (GC) | Oak Ridges Moraine Special Zone (ORM) | Rural Residential (RR) |
| Community Facility (CF) | General Industrial (MG) | Open Space (OS) | Shoreline Residential (SR) |
| Development (D) | Hamlet Commercial (HC) | Provincially Significant Wetland (PSW) | Waste Disposal Industrial (MD) |
| Environmental Protection (EP) | Hamlet Residential (HR) | Recreation Commercial (RC) | Rural (RU) |
| Extractive Industry (ME) | Limited Service Residential (LSR) | | |

