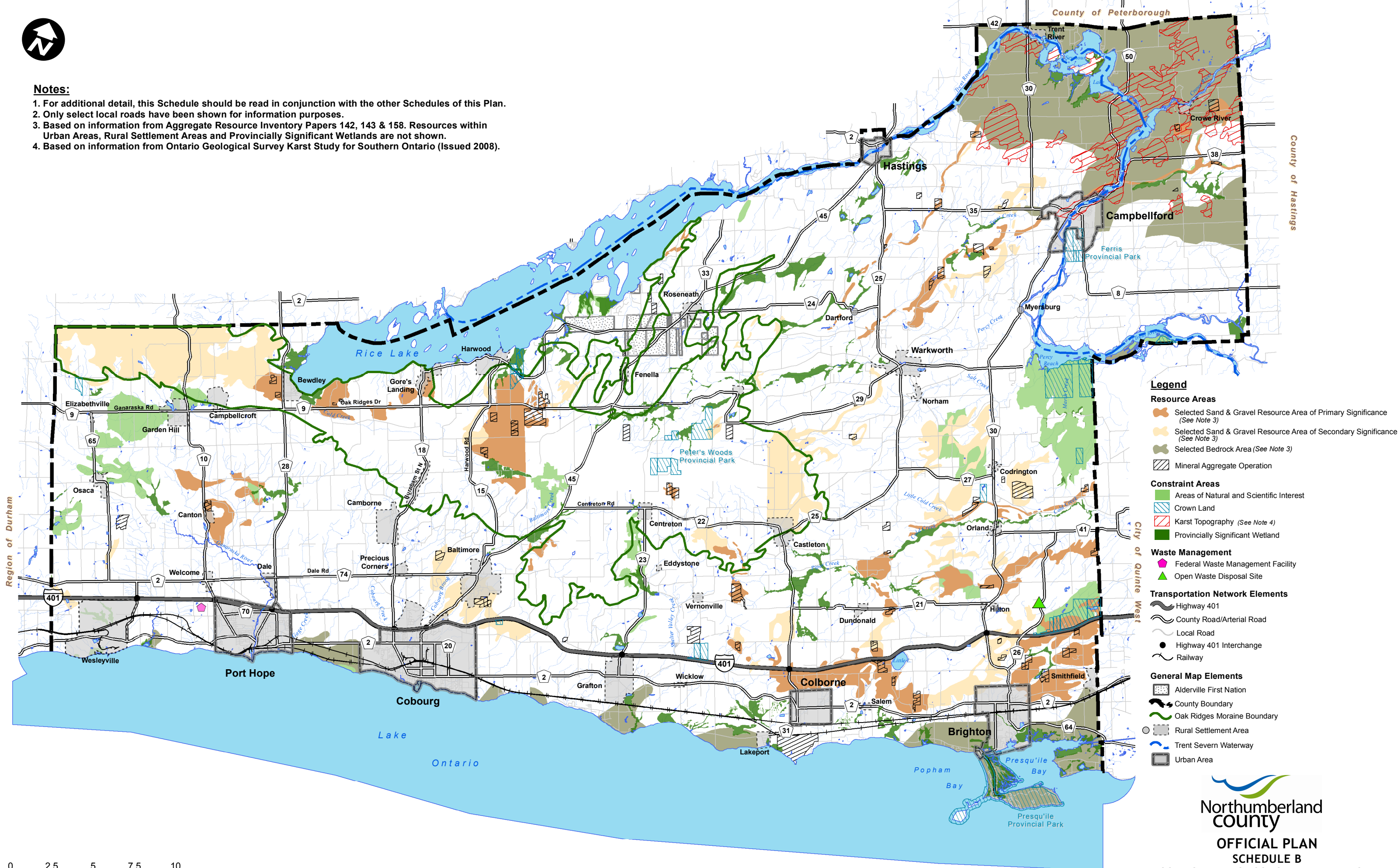




Notes:

1. For additional detail, this Schedule should be read in conjunction with the other Schedules of this Plan.
2. Only select local roads have been shown for information purposes.
3. Based on information from Aggregate Resource Inventory Papers 142, 143 & 158. Resources within Urban Areas, Rural Settlement Areas and Provincially Significant Wetlands are not shown.
4. Based on information from Ontario Geological Survey Karst Study for Southern Ontario (Issued 2008).



Legend

Resource Areas

- Selected Sand & Gravel Resource Area of Primary Significance (See Note 3)
- Selected Sand & Gravel Resource Area of Secondary Significance (See Note 3)
- Selected Bedrock Area (See Note 3)
- Mineral Aggregate Operation

Constraint Areas

- Areas of Natural and Scientific Interest
- Crown Land
- Karst Topography (See Note 4)
- Provincially Significant Wetland

Waste Management

- Federal Waste Management Facility
- Open Waste Disposal Site

Transportation Network Elements

- Highway 401
- County Road/Arterial Road
- Local Road
- Highway 401 Interchange
- Railway

General Map Elements

- Alderville First Nation
- County Boundary
- Oak Ridges Moraine Boundary
- Rural Settlement Area
- Trent Severn Waterway
- Urban Area

